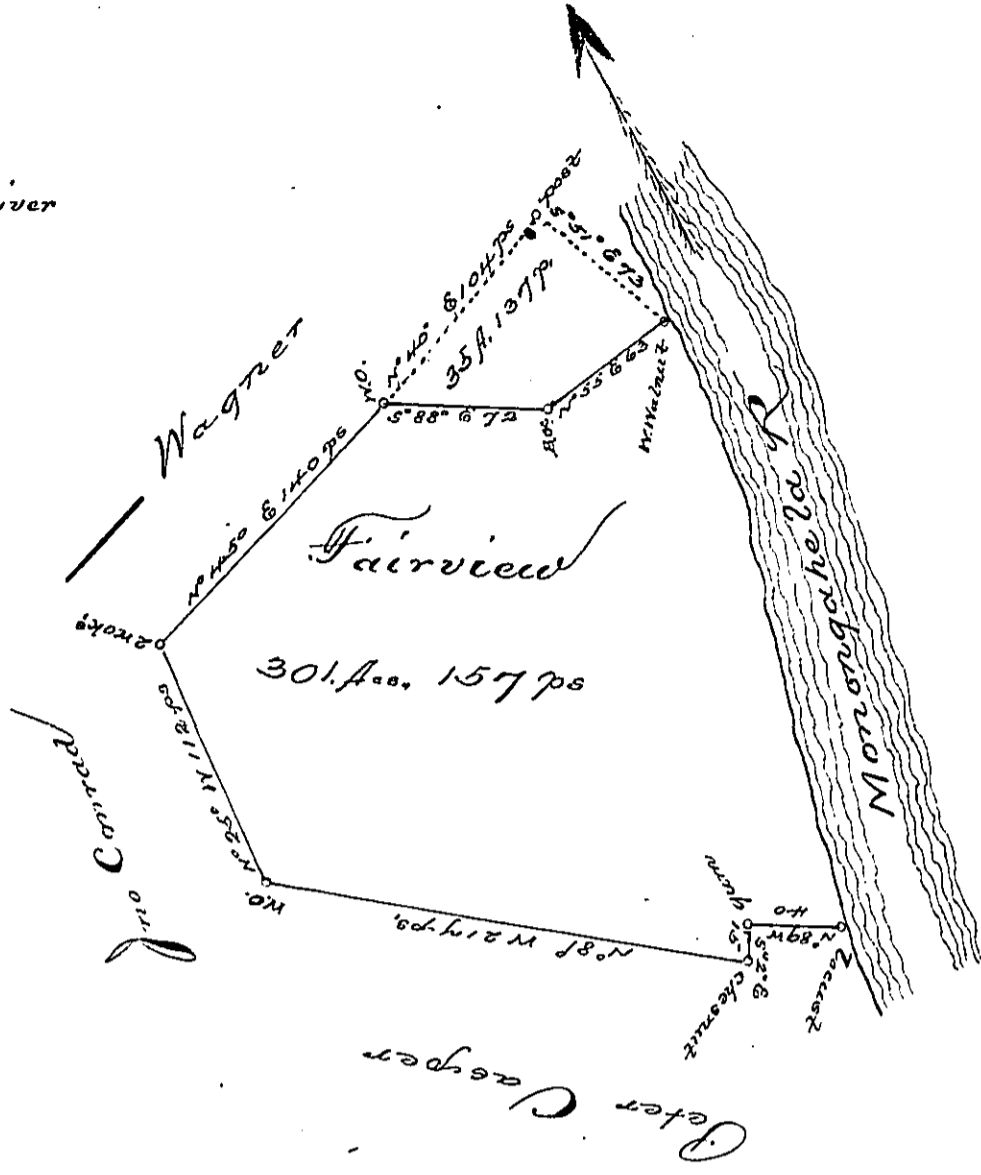


Courses to up the River
5, 26 & 41 ps.
6, 13 & 222 Ac.



In y^e Return made for Jno. Proctor, Henry appears is mentioned Ass^t of Nath^l Hammon but he is only Agent to Benj. Fry.

A Draught of a survey called "Fairview", situate on the Monongahela River in Washington County Cont^y 301. Acs. 157 ps. and y^e usual allow^{ce} executed Nov^r 26th 1785. for Benj^m Fry Ass^t of Nath^l Hammon, in pursuance of an Order granted to said Hammon, for 300 Acs. No. 3768. dated August 26th 1769. Note this survey is disputed by Jno. Proctor, who had it surveyed and returned in the name of Jeremiah Proctor. Proctor's Return includes 35 Acs. 137 ps. more than Fry's, which Fry does not claim.

Presley Nevill
Marr^d Rizick } *P. J.*

Jno. Lukens Esq^r
Sur. Gen^l

IN TESTIMONY that the above is a copy of the original remaining on file in the Department of Internal Affairs of Pennsylvania, made conformably to an Act of Assembly approved the 16th day of February, 1833. I have hereunto set my Hand and caused the Seal of said Department to be affixed at Harrisburg, this

third day of September 1895

James W. Latta
Secretary of Internal Affairs.